
Report of the Head of Scrutiny and Member Development

Report to Scrutiny Board (Safer and Stronger Communities)

Date: 21st October 2013

Subject: Recommendation Tracking – Fuel Poverty Inquiry

Are specific electoral Wards affected? If relevant, name(s) of Ward(s):	<input type="checkbox"/> Yes	<input checked="" type="checkbox"/> No
Are there implications for equality and diversity and cohesion and integration?	<input type="checkbox"/> Yes	<input checked="" type="checkbox"/> No
Is the decision eligible for Call-In?	<input type="checkbox"/> Yes	<input checked="" type="checkbox"/> No
Does the report contain confidential or exempt information? If relevant, Access to Information Procedure Rule number: Appendix number:	<input type="checkbox"/> Yes	<input checked="" type="checkbox"/> No

Summary of main issues

1. This report sets out the progress made in responding to the recommendations arising from the previous Scrutiny inquiry into Fuel Poverty.
2. The Scrutiny recommendation tracking system allows the Scrutiny Board to monitor progress and identify completed recommendations; those progressing to plan; and those where there is either an obstacle or progress is not adequate. The Board will then be able to take further action as appropriate.

Recommendations

3. Members are asked to:
 - Agree those recommendations which no longer require monitoring;
 - Identify any recommendations where progress is unsatisfactory and determine the action the Board wishes to take as a result.

1 Purpose of this report

- 1.1 This report sets out the progress made in responding to the recommendations arising from the previous Scrutiny inquiry into fuel poverty during 2011/12.

2 Background information

- 2.1 Recognising that fuel poverty impacts on individuals, the community and public services in many different ways, the Safer and Stronger Communities Scrutiny Board conducted an in-depth inquiry during 2011/12. In April 2012, the Board produced a report setting out its findings and recommendations following its inquiry.
- 2.2 The Scrutiny recommendation tracking system allows the Board to monitor progress and identify completed recommendations; those progressing to plan; and those where there is either an obstacle or progress is not adequate. The Board will then be able to take further action as appropriate.

3 Main issues

- 3.1 A standard set of criteria has been produced to enable the Board to assess progress. These are presented in the form of a flow chart at Appendix 1. The questions in the flow chart should help to decide whether a recommendation has been completed, and if not whether further action is required.
- 3.2 To assist Members with this task the Principal Scrutiny Adviser, in liaison with the Chair, has given a draft status for each recommendation. The Board is asked to confirm whether these assessments are appropriate and to change them where they are not. Details of progress against each recommendation is set out within the table at Appendix 2.

4 Corporate Considerations

4.1 Consultation and Engagement

- 4.1.1 Where internal or external consultation processes have been undertaken with regard to responding to the Scrutiny Board's recommendations, details of any such consultation will be referenced against the relevant recommendation within the table at Appendix 2.

4.2 Equality and Diversity / Cohesion and Integration

- 4.2.1 Where consideration has been given to the impact on equality areas, as defined in the Council's Equality and Diversity Scheme, this will be referenced against the relevant recommendation within the table at Appendix 2.

4.3 Council Policies and City Priorities

- 4.3.1 The scrutiny recommendations are complementary to the priorities of the Affordable Warmth Strategy (2007-2016), City Priority Partnership Plan for Health and Wellbeing and Public Health Outcomes Framework.

4.4 Resources and Value for Money

- 4.4.1 Details of any significant resource and financial implications linked to the Scrutiny recommendations will be referenced against the relevant recommendation within the table at Appendix 2.

4.5 Legal Implications, Access to Information and Call In

- 4.5.1 This report does not contain any exempt or confidential information.

4.6 Risk Management

- 4.6.1 This section is not relevant to this report.

5 Conclusions

- 5.1 The Scrutiny recommendation tracking system allows the Board to monitor progress and identify completed recommendations. Progress in responding to those recommendations arising from the Scrutiny inquiry into fuel poverty is detailed within the table at Appendix 2 for Members' consideration.

6 Recommendations

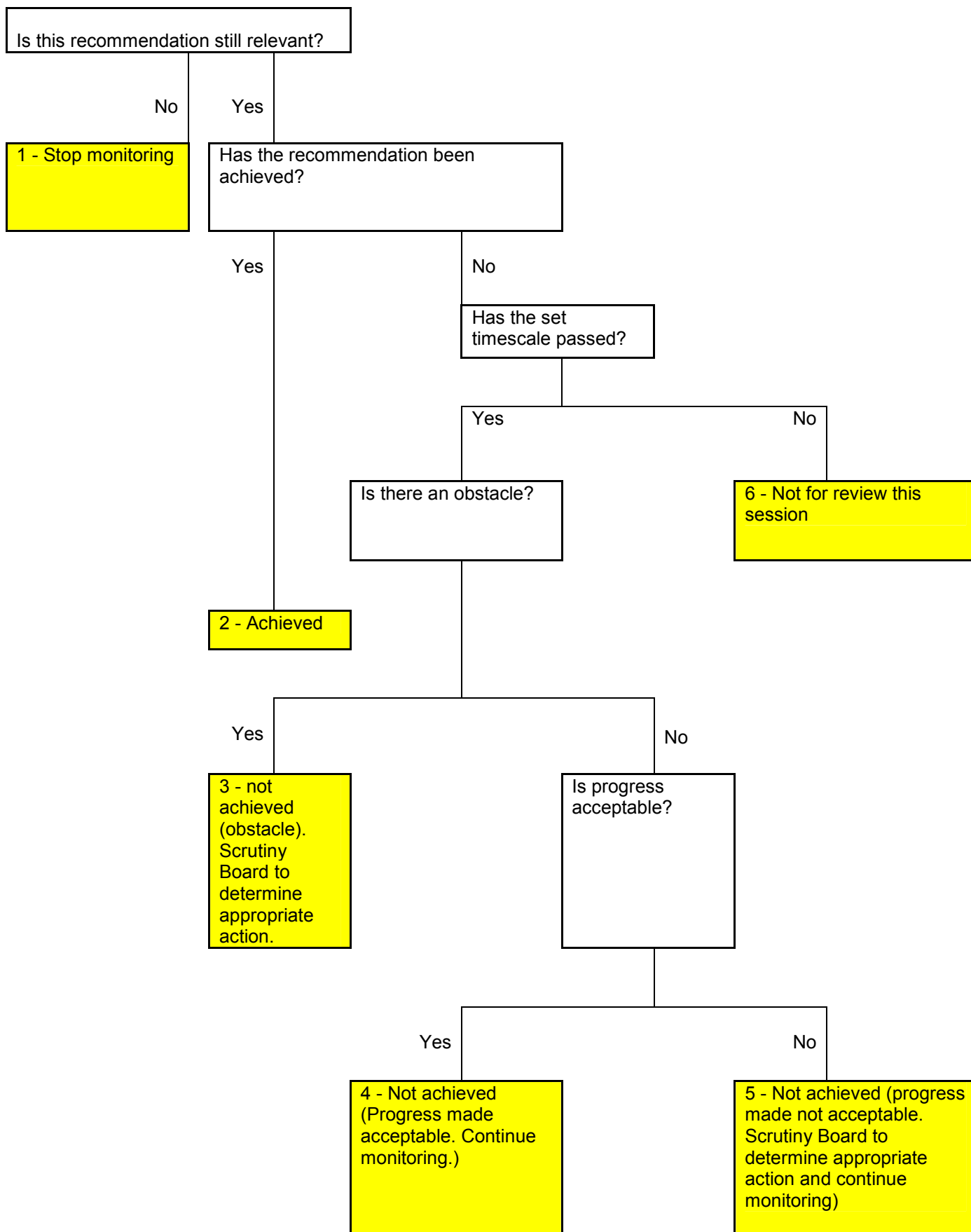
- 6.1 Members are asked to:
- Agree those recommendations which no longer require monitoring;
 - Identify any recommendations where progress is unsatisfactory and determine the action the Board wishes to take as a result.

7 Background documents¹

- 7.1 None.

¹ The background documents listed in this section are available to download from the Council's website, unless they contain confidential or exempt information. The list of background documents does not include published works.

Recommendation tracking flowchart and classifications:
Questions to be Considered by Scrutiny Boards



Fuel Poverty Inquiry (April 2012)

Categories

- 1 - Stop monitoring
- 2 - Achieved
- 3 - Not achieved (Obstacle)
- 4 - Not achieved (Progress made acceptable. Continue monitoring)
- 5 - Not achieved (Progress made not acceptable. Continue monitoring)
- 6 - Not for review this session

Recommendation for monitoring	Evidence of progress and contextual information	Status (categories 1 – 6) (to be completed by Scrutiny)	Complete
<p>Recommendation 5. That the Director of Public Health in Leeds works closely with the Director of Environment and Neighbourhoods to develop a clear strategy around fuel poverty data collection before April 2013.</p>	<p>Formal Response (provided by the Director of Public Health and Director of Environment and Neighbourhoods in July 2012):</p> <p>The Scrutiny report recognises the need to ensure that local trends in fuel poverty are monitored effectively to demonstrate progress in tackling fuel poverty, set out in the Public Health Outcomes Framework. This is a complicated request, as fuel poverty is a function of home energy efficiency levels, energy prices, income and a host of other minor factors. Additionally, the impact of fuel poverty on an individual depends to a large extent on their vulnerability, with elderly people, the very young and people with disabilities being much more at risk of ill health. Whilst there are good fuel poverty statistics available from Government, these are very high level. Scrutiny members were more interested in gathering and manipulating local data in order to target interventions to support most vulnerable people.</p>		

	<p>Currently, local fuel poverty assessments are based on the last Home Energy Conservation Association (HECA) survey conducted in 2009 which Local Authorities are no longer required to undertake, whilst they await details of the successor legislation to the Home Conservation Act 1995. Therefore, the Council has suspended the annual HECA survey and instead is monitoring change using a combination of energy efficiency measures installed, fuel use data and Energy Performance Certificates. The Director of Public Health agrees to work closely with the Director of Environment and Neighbourhoods to develop a clear strategy around fuel poverty data collection, to include housing/energy data, income data and health factors, before the end of April 2013.</p> <p>Position reported in November 2012:</p> <p>The Energy Policy Team (EPT) have begun purchasing Energy Performance Certificate data to build an up to date picture of energy efficiency across the Leeds Housing Stock and to better define our understanding of Fuel Poverty. EPT and NHS Leeds have also met to begin the process of combining Public Health and energy efficiency data at Middle Super Output Area level in order to better target energy measures and develop a better understanding of the effectiveness of energy efficiency/heating measures in alleviating ill health.</p> <p>Current Position</p> <p>EPT have now procured up to date EPC data to target interventions under the Green Deal/ECO. This has also been supplemented by desk top surveys of the City using mapping technology to select areas for specific works, for example properties likely to be suitable for narrow cavity wall insulation. Our procurement process requires prospective contractors for all schemes, such as Wrap Up Leeds, Wrap UP Leeds +, Wrap Up Leeds ECO and the upcoming City Region wide Green Deal framework, to report back data on the</p>	<p>4 - Not achieved (Progress made acceptable. Continue monitoring.)</p>	
--	--	--	--

	<p>housing stock in order to maintain an up to date level of knowledge.</p> <p>Additionally, we use benefits data held by the council to target measures towards low income groups where possible Within primary care, those identified as being at high risk of hospital admission (using risk stratification data – see Recommendation 9 (i)) are being assessed by their GP practice, which includes their needs for fuel poverty support.</p> <p>Furthermore, a bid has been submitted by the Public Health and Environment Policy Teams to National Energy Action. We have requested expertise around systematic data collection in order to better report on the Fuel Poverty priority in the Joint Health & Wellbeing Strategy (2013) which fits with the new low income high cost definition in Leeds as recommended by the Hills Review.</p>		
<p>Recommendation 7 That the Chair of the Member Development Working Group ensures that fuel poverty is included in the development of the public health role of Elected Members through the Member Development Programme and Induction programme in preparation for the new system being operational from April 2013.</p>	<p>Formal Response (provided by the Chair of the Member Development Working Group in July 2012):</p> <p>The Member Development Working Group met on 20th June and welcomed the recommendation. At the meeting we discussed the draft events programme for Autumn 2012 and agreed that training for Members on fuel poverty should form part of the ‘Healthy Leeds’ series. (‘Healthy Leeds is an on-going programme supported by the Executive Member for Health and Well-being, which aims to develop the public health role of Members as well as informing them about changes to the health landscape).</p> <p>The Working Group will progress this event with the Executive Member for Health and Well-being and the relevant officers, with the aim of running an initial event on Fuel Poverty by end of October 2012.</p>		

	<p>Position reported in November 2012:</p> <p>The Fuel Poverty seminar will take place on Wednesday 19th December. This practical and interactive session, presented by Rob Curtis (Fuel Poverty Officer) and chaired by Cllr Lisa Mulherin will cover:</p> <ul style="list-style-type: none"> - what is meant by fuel poverty and the current situation in Leeds - causes and health implications - how to recognise those at risk and get support for your constituents - update on the Green Deal and energy efficiency initiatives. <p>(There is also likely to be a brief update on Health Protection eg flu immunisation programme as part of this event).</p> <p>Current position:</p> <p>Member Development held two fuel poverty related sessions in 2012-13. Both were delivered in December, one was on Bulk Fuel purchasing and the other on Fuel Poverty. This year a Fuel Poverty session has been scheduled to take place in November that forms part of the Members Health is Everyone's Business Programme, it will provide an update on the changes to the various schemes.</p>	2 - Achieved	
<p>Recommendation 8 (i) That Area Committees nominate a Fuel Poverty Champion to drive forward local action in addressing fuel poverty problems associated with their particular areas.</p>	<p>Formal Response (provided by the Assistant Chief Executive (Customer Access and Performance) in July 2012):</p> <p>During discussions at the Area Chairs Forum meeting on 13th July it was agreed that the issue of fuel poverty is a major concern for Area Committees and that local action needs to be determined to tackle particular problems at a local level. A review of Area working commenced in June which will look at the role of Area Committees and will include a review of how Area Committees can be enabled to</p>		

	<p>provide a local influence over a range of issues and services. This review will cover the role of Area Committee sub-boards and champions in order to make effective use of members time and influence, and to ensure that robust links are created with officers in council services and partner organisations to enable the roles of champions to be productive and influential. It was therefore agreed that the Area Committee’s role in influencing the fuel poverty agenda be included in the review of Area Working, and that appropriate responsibility for an Area Committee champion or sub board would be included in the recommendations of the review.</p> <p>Position reported in November 2012:</p> <p>After an extensive consultation exercise with elected members, council officers, partners and other stakeholders, the Review of Area Working has reached the stage of a report being taken to CLT in October prior to formal recommendations being taken to Executive Board in December 2012. The recommendations will cover the appointment of Area Committee Champions.</p> <p>Current position:</p> <p>The review of area working has been completed with a number of recommendations now being implemented including:</p> <ul style="list-style-type: none"> • The nomination of Area Lead Members to work with Executive Board portfolio holders to support key priority areas children’s services; health and well-being; community safety; environmental services; adult social care; and employment, skills and welfare reform • The introduction of the concept of “community councils” building on the work of area committees to provide an enhanced local democratic leadership model and engage local people more effectively. 	<p>4 - Not achieved (Progress made acceptable. Continue monitoring.)</p>	
--	--	--	--

	<p>These and other recommendations being implemented are intended to provide a greater local influence on service design, delivery and action to tackle local issues including fuel poverty. Although the model for Area Lead Members is designed so that the focus for action will be agreed by the Area Lead Members, Executive Board members, locality teams and services, we will make sure that fuel poverty is written into the supporting briefs as appropriate.</p> <p>In addition there are four propositions being developed through the new Citizens and Communities directorate one of which is aimed at tackling financial hardship including a fuel poverty strand which will drive forward local action through Area Lead Members and other champions</p>		
<p>Recommendation 8 (ii) That the Area Committee Fuel Poverty Champions liaise with their respective Locality Health and Wellbeing Managers to agree the appointment of one Fuel Poverty Champion from each of the 3 localities onto the Leeds Affordable Warmth Partnership.</p>	<p>Formal Response (provided by the Assistant Chief Executive (Customer Access and Performance) in July 2012):</p> <p>One aspect covered in the Area Working review will be the links between Area Committees, Area Support Teams and Area Leadership Teams with the various Partnerships in Leeds. Consultations will take place with a wide range of stakeholders, including Locality Health and Wellbeing Managers and Partnership Boards. It has been agreed that effective links and representation for Area Committees on the Leeds Affordable Warmth Partnership will be included in the review.</p> <p>Position reported in November 2012:</p> <p>The Review of Area Working report being taken to Executive Board in December 2012 covers the role of Area Committee Champions and will include recommendations relating to the role of champions and their links with Executive Board and other partnership boards.</p>		

	<p>Current position:</p> <p>As set out in recommendation 8(i) above the new approach to developing the Area Lead Member role will embed fuel poverty into the locality working agenda.</p>	<p>3 - not achieved (obstacle). Scrutiny Board to determine appropriate action.</p>	
<p>Recommendation 9. That the Health and Wellbeing Board works with the local Clinical Commissioning Groups to ensure that:</p> <p>(i) A consistent and systematic approach to identifying the needs of vulnerable householders at risk of fuel poverty is being adopted as part of the developing risk stratification process.</p>	<p>Formal Response (provided by the Director of Public Health in July 2012):</p> <p>The Integrated Health and Social Care Board agreed that the Health and Social Care Integrated neighbourhood teams would use a consistent and systematic approach to identify the needs of vulnerable patients and deliver high impact interventions to reduce excess winter deaths. This process will be embedded within the roll out of the integration of health and social care across the city. The approach consists of three elements – risk stratification (to identify those who in the future are most likely to have higher needs), integrated health and social care teams (including primary care), and systematic self-management – ensuring the patient is at the centre of decisions about their care.</p> <p>Position reported in November 2012:</p> <p>Systematic referral systems have been embedded and strengthened within Leeds Community Health Care and 35 Energy champions have been identified and trained. The Energy Champions identified have a particular focus in the Health and Social Care Integrated neighbourhood teams.</p> <p>Next stage is to establish how to further strengthen this approach within the integrated teams as this programme is rolled out across the city.</p>		

	<p>Current position: The Integrated Health and Social Care (IHSC) transformation programme is in year 2 of roll out and is operating across Leeds.</p> <p>As mentioned under Recommendation 5, the clinical information tool used in risk stratification, incorporates assessment for fuel poverty needs, as well as needs for other high impact interventions to reduce the hazardous effects of cold, as outlined in the Cold Weather Plan.</p> <p>Energy Champions have been identified to work in each of the IHSC teams. A resource pack has been developed to support GP practices and Integrated Health and Social care teams to pro-actively assess 'high risk' patient's needs. This assessment includes cold and damp housing conditions and referral into the Warm Homes Service where appropriate.</p> <p>In addition the Energy Champions programme continues to operate In Leeds Community Health Care (LCHC) where patients are routinely assessed for issues related to fuel poverty. A CQUIN (Quality improvement incentive scheme) was developed for LCHC (2012/2013) which improved the systematic identification and referral of patients into the Warm Homes Service. This resulted in more patients being identified across all of the LCHC adult services and increased numbers of patients receiving winter warmth support. Public Health are continuing to support LCHC beyond the end of the CQUIN to ensure sustainability of this programme.</p>	<p>4 - Not achieved (Progress made acceptable. Continue monitoring.)</p>	
<p>Recommendation 9 That the Health and Wellbeing Board works with the local Clinical Commissioning Groups to ensure:</p> <p>(ii) that as part of this process, a consistent approach is being adopted by the developing integrated health and</p>	<p>Formal Response (provided by the Director of Public Health in July 2012):</p> <p>The Integrated Health and Social Care Board agreed that once individuals have been identified through the risk stratification process, the Health and Social Care Integrated neighbourhood teams would deliver high impact interventions recommended by the Department of Health to reduce excess winter deaths. These</p>		

<p>social care teams in ensuring that, once identified, those at risk of fuel poverty are effectively being referred to appropriate support schemes.</p>	<p>interventions include a fuel poverty assessment, benefits review, flu vaccination, lifestyle advice and support, telecare and telehealth referral as appropriate and falls prevention assessments.</p> <p>Position reported in November 2012:</p> <p>The ten high impact interventions to reduce excess winter deaths are being incorporated within the organisational development framework within the health and social care integrated teams. The focus of this programme is to ensure that the workforce of the future have the correct level of skills, knowledge and competencies to deliver a comprehensive integrated service in the future.</p> <p>Current position: See Recommendation 9 (i).</p> <p>As of March 2013, 12 Integrated Health and Social Care Teams cover the whole of Leeds. All Teams have at least one Energy Champion allocated, as well as adopting a multi-disciplinary assessment in which inadequate heating in the home is being identified, where this is flagged up as an issue, the Teams would be expected to refer into the Warm Homes Service where appropriate.</p> <p>Energy Champions have been identified and trained within Integrated Health and Social Care Teams, systems have been established and this has been running since April 13. There have been low numbers of referrals from IHSC teams over the summer months as expected, however it is difficult to establish effectiveness until the teams have been in operation for 12 months, at which time there will be a full review of activity around affordable warmth.</p> <p>This has been raised at the Better Lives Board by the Director of Integration and agreed as a priority to increase referrals. Public Health have offered to extend training of Energy champions to other members of the IHSCTs.</p>	<p>4 - Not achieved (Progress made acceptable. Continue monitoring.)</p>	
---	--	--	--

<p>Recommendation 10 (i) That the Executive Board and Health and Wellbeing Board fully supports and regularly monitors the development of a simple, systematic referral pathway and effective uptake for fuel poverty support from key health and council services (this maybe by using the Multi Agency Referral Scheme (MARS) if appropriate.</p>	<p>Formal Response (provided by the Director of Public Health in July 2012):</p> <p>The Director of Public Health provided a report to the Executive Board and Health and Wellbeing Board in June 2012 advising on this particular recommendation. This recommendation was agreed by both the Executive Board and the Health and Wellbeing Board. It was proposed that in developing a simple systematic referral pathway across Health and Council services, a twin track approach will need to be adopted. This will involve:</p> <ul style="list-style-type: none"> • a universal multi-agency referral system to be used across the city by frontline staff linked to other key initiatives, or used in targeted neighbourhoods to support customers to access a wide range of preventative services including affordable warmth, and • a specialised referral pathway specifically for the referral of clients with an existing health condition used by the health and social care integrated teams. <p>This proposed approach was agreed by the Executive Board.</p> <p>Position reported in November 2012:</p> <p>A twin track approach is being developed for the City.</p> <p>The first of this twin track approach consists of the Hotspots scheme which is being promoted to all frontline workers across Leeds. This scheme is a universal referral system into the Hotspots scheme which provides a wide range of advice and support around energy efficiency measures. Where MARS (Multi agency referral scheme) is in operation, currently in Hyde Park, frontline workers are referring people into energy saving advice via the Hotspots Scheme</p>		
--	---	--	--

	<p>The second of the twin track approaches is the Warm Homes Service/Energy Champion scheme. This scheme is a specialised referral system specifically developed for people with long term health conditions. People whose health conditions are exacerbated by living in cold damp conditions are identified and referred into the Warm Homes Service scheme by trained Energy Champions.</p> <p>Current position:</p> <p>A twin track approach has been developed for the City.</p> <p>The first of this twin track approach consists of the Hotspots scheme which is being used by frontline workers across Leeds. Hotspots is currently undergoing a re-tendering process which may affect how referrals are handled, therefore we are not actively promoting the scheme, although it is still being used by existing referrers. Once the re-tendering has been completed, the scheme will be re-launched to new and existing member organisations including those in the voluntary sector.</p> <p>This scheme is a universal referral system into the Hotspots scheme which provides a wide range of advice and support around energy efficiency measures, fire safety and security.</p> <p>Where MARS (Multi agency referral scheme) is in operation, currently in Hyde Park with plans to roll out to Middleton and Bramley, frontline workers are referring people into MARS with onward referrals to the Hotspots Scheme. (This is being led by Customer Access and Adult Social Care - Health and Wellbeing)</p> <p>The second of the twin track approaches is the Warm Homes Service/Energy Champion scheme. This scheme is a fast track, specialised referral system specifically developed for people with long term health conditions. People whose health conditions are exacerbated by living in cold damp conditions are identified and</p>	<p>4 - Not achieved (Progress made acceptable. Continue monitoring.)</p>	
--	---	--	--

	<p>referred into the Warm Homes Service scheme by trained Energy Champions.</p> <p>Environment Policy Team and Public Health agree that the twin track approach adopted in Leeds is effective. It provides a universal referral scheme through Hotspots for all frontline workers in Leeds and a fast track referral scheme for health and social care staff, targeting people with existing health conditions. These 2 referral schemes continue to run side by side and complement each other.</p> <p>The West Yorkshire Hotspots scheme continues to provide an effective and simple mechanism for partner organisations to refer vulnerable households to energy efficiency, income maximisation and home safety advice. However, due to changes in the type of grants available to householders and the amount of support that is presently available to the scheme from the central advice provider/administrator (currently Yorkshire Energy Services), the West Yorkshire Hotspots partners are undertaking a retendering process for the scheme advice provider/administrator. As part of this process, we are reviewing the contractual relationship between West Yorkshire Hotspots and the advice provider to ensure that the scheme remains as effective as possible for householders.</p> <p>The Warm Homes Service/Energy Champion scheme continues to provide an effective service for people with existing long term health conditions. During 12/13 the Warm Homes Service received 86 referrals from Leeds Community Health Care Energy Champions, exceeding the target of 55 referrals as stated in the contract.</p> <p>As stated in recommendation 9, increasing referrals into Fuel poverty has been raised at the Better Lives Board by the Director of Integration and agreed as a priority. Public Health have offered to extend training of Energy champions to other members of the IHSCTs.</p>		
--	---	--	--

<p>Recommendation 11. That the Director of Environment and Neighbourhoods works closely with Voluntary Action Leeds to explore opportunities for delivering training on the hotspots referral scheme more widely across the third sector and in raising the profile of fuel poverty generally.</p>	<p>Formal Response (provided by the Director of Environment and Neighbourhoods in July 2012):</p> <p>Over the past two years, Environment and Neighbourhoods has undertaken Hotspots/fuel poverty training for many teams and organisations that regularly come in to contact with vulnerable members of the public, including 24 voluntary sector organisations. The Director of Environment and Neighbourhoods agrees to build on this progress by working with Voluntary Action Leeds to organise Hotspots training for additional third sector organisations.</p> <p>Position reported in November 2012:</p> <p>The Fuelsavers Team in Environment and Neighbourhoods have arranged with Voluntary Action Leeds to publicise the Hotspots scheme through their publications and newsletters etc in the run up to winter. We believe that voluntary sector organisations will be most receptive to the Affordable Warmth message at this time of year.</p> <p>Current position:</p> <p>Hotspots training was advertised through Voluntary Action Leeds during winter 2012. Hotspots is currently undergoing a re-tendering process which may affect how referrals are handled, therefore we are not actively promoting the scheme. Once the re-tendering has been completed, the scheme will be re-launched to new and existing member organisations including those in the voluntary sector.</p> <p>In the meantime, we have continued to raise the profile of fuel poverty and energy efficiency within the voluntary sector through the community grants fund which was distributed as part of the 2012-13 Warm Homes Healthy People Project. This enabled 35 voluntary sector organisations, many of them new partners, to assist vulnerable people in their communities over the winter period. We continue to engage our voluntary sector partners through the</p>	<p>2 - Achieved</p>	
---	--	---------------------	--

	<p>Affordable Warmth Newsletter, last sent in Summer 2013 and have invited them to a launch event for Wrap Up Leeds ECO in October.</p> <p>As part of the Warm Homes Healthy People Fund, we have provided funding and support for additional/expanded projects for our existing third party partners such as Care & Repair, Groundwork Leeds and the CAB network.</p> <p>Current Public Health contracts with 8 voluntary sector agencies require them to report on signposting/ referral activity into affordable warmth schemes, alongside activity re: healthy lifestyles, mental health etc.</p>		
<p>Recommendation 12. That the Director of Environment and Neighbourhoods monitors the development of the ‘Keeping Warm in Yorkshire and Humber’ web based resource tool and assists in promoting it’s use once formally launched.</p>	<p>Formal Response (provided by the Director of Environment and Neighbourhoods in July 2012):</p> <p>Environment and Neighbourhoods was involved in the original Warm Homes Healthy People funding bid for ‘Keeping Warm in Yorkshire and Humber’ and has assisted in the design and development of the toolkit. The Director of Environment and Neighbourhoods agrees to embed the promotion of ‘Keeping Warm in Yorkshire and Humber’ in the actions of the Affordable Warmth Partnership and further promote it amongst partner organisations.</p> <p>Position reported in November 2012:</p> <p>The Fuelsavers Team in Environment and Neighbourhoods, together with NHS Airedale Bradford and Leeds have come together with their relevant communications teams to plan to utilise the tool and promote it to relevant partners. The resource will be utilised in a forthcoming joint NHS Airedale, Bradford and Leeds/Leeds City Council public health campaign promoting winter warmth in the run up to winter.</p>		

	<p>Current position:</p> <p>The Environment Policy Team continues to monitor the Winter Warmth website (formerly Keeping Warm in Yorkshire & The Humber) both they and Public Health continue to make use of its messages and resources in winter warmth communications. We also introduce other organisations to it in training sessions, whilst many of our partner organisations including Care and Repair and Groundwork Leeds have also promoted and used messages from the website to promote affordable warmth.</p>	2 - Achieved	
<p>Recommendation 13. In promoting future based schemes aimed at achieving affordable warmth we recommend that the Director of Environment and Neighbourhoods works closely with the Head of Communications and Marketing to develop an appropriate framework to assist in encouraging greater take up of such schemes.</p>	<p>Formal Response (provided by the Director of Environment and Neighbourhoods in July 2012):</p> <p>The Fuelsavers team in Environment and Neighbourhoods have worked closely with Corporate Communications team (and Yorkshire Energy Services, the contractor) to develop and deliver a communications plan to support Wrap Up Leeds. The communications approach has led to over 5,000 installed measures to date and the effectiveness of different channels is being monitored and will be evaluated at scheme end. The Director of Environment and Neighbourhoods agrees to work closely with the Communications Team to use the lessons learnt to help develop a communications framework based on delivery of the Green Deal/ECO. This framework can then be used to co-ordinate the publicity of future domestic energy efficiency and affordable warmth schemes.</p> <p>Position reported in November 2012:</p> <p>The Fuelsavers Team in Environment and Neighbourhoods and Corporate Communications continue to work closely to deliver the Wrap Up Leeds communications plan which has so far led to the installation of over 7300 measures.</p>		

	<p>The Fuelsavers Team and Corporate Communications will be working closely with NHS Airedale, Bradford and Leeds to develop a campaign to promote winter warmth over the coming winter period. This will include promoting schemes such as Warm Front, the Warm Homes Service, run by Care and Repair and the Green Doctor, run by Groundwork Leeds, to provide improved heating and insulation measures to vulnerable households.</p> <p>Current position: Environment And Neighbourhoods worked closely with the communications team to publicise all of our projects including Wrap Up Leeds, Wrap Up Leeds + and the Collective Fuel Switching Scheme. We also worked closely with NHS Leeds Public Health and communications to promote the 2012/13 winter warmth campaign and Warm Homes Healthy People Fund.</p> <p>Both Environment and Neighbourhoods and Public Health are currently working with the communications team to plan publicity for the Wrap Up Leeds ECO scheme and the 2013/14 winter warmth campaign which incorporates priorities from the Cold Weather Plan.</p> <p>We are also undertaking an evaluation of the Collective Fuel Switching scheme (see recommendation 20) of which communications will be one of the key areas.</p>	<p>4 - Not achieved (Progress made acceptable. Continue monitoring.)</p>	
<p>Recommendation 14. That once available the Director of Environment and Neighbourhoods reports to the Executive Board and Scrutiny on the final proposal for the Green Deal and ECO schemes and how the Council and its partners intend to promote and deliver these schemes locally.</p>	<p>Formal Response (provided by the Director of Environment and Neighbourhoods in July 2012):</p> <p>The Council has engaged closely with DECC to ensure that we are well placed when the Green Deal/ECO are launched in October 2012. As part of this, the Council is acting as the 'anchor authority' to develop a detailed business case for the Leeds City Region to establish a Green Deal/ECO framework and has engaged with the Affordable Warmth Partnership to look at ways of involving local partners in delivery. The Director agrees to present the final</p>		

	<p>proposals to the Executive Board for approval, along with plans to publicise and roll out the Green Deal/ECO in Leeds as soon as is practicable. To ensure that momentum from delivering Wrap Up Leeds is maintained, the Director will undertake a procurement exercise for energy efficiency led regeneration in deprived areas under ECO, to launch in October/November 2012.</p> <p>Position reported in November 2012:</p> <p>The Fuelsavers Team continues to develop a business plan for the wider Green Deal/ECO framework within Leeds City Region, and continues to work with the Affordable Warmth Partnership to ensure that local partners are involved in delivery. This is to be reported to Executive Board in December, subject to Leeds City Region CEO approval.</p> <p>In the interim, the Fuelsavers Team has developed a Green Deal Demonstrator project using grant funding from DECC to offer Green Deal and ECO measures to households. This was approved by Executive Board on the 17th October and a mini-competition has been launched to secure a delivery partner.</p> <p>To test the engagement of the community sector, the Fuelsavers Team have also developed a plan with Groundwork Leeds to offer the Green Deal/ECO alongside an expanded Green Doctor Service. This will be dependent on whether our bid for the Warm Homes Healthy People Fund is successful.</p> <p>Current position:</p> <p>Leeds City Council successfully ran its Green Deal Demonstrator project in early 2013 which, although closed to new applicants, is continuing to install energy efficiency measures in homes across Leeds. The Groundwork Leeds pilot project, funded through the Warm Homes Healthy People Fund, successfully demonstrated the</p>	<p>2 - Achieved</p>	
--	--	---------------------	--

	<p>ability of the voluntary sector to engage with the Green Deal process and refer households to the Green Deal/ECO as well as providing small scale measures and behavioural advice, Leeds is now undertaking its Wrap Up Leeds ECO project, which is making the most of available ECO funding until the long term City Region Green Deal framework is in place in late 2014. The Green Doctor service will be supporting Wrap Up Leeds/ECO with area based promotion work during this time. The Director of Environment and Neighbourhoods reported progress on the development of the Leeds City Region Green Deal Framework to the Executive Board on 12th December 2012.</p>		
<p>Recommendation 15. That the Council utilises the Energy Performance Certificate data, when made available by Government, to identify specific properties and areas to target with affordable warmth measures and to proactively work with energy suppliers and others to explore provision of grants from existing CERT and CESP and the forthcoming ECO.</p>	<p>Formal Response (provided by the Director of Environment and Neighbourhoods in July 2012):</p> <p>The Council has worked hard since the late-90s to develop and update and update a domestic energy database. We have recently combined this database with other Council databases and GIS mapping techniques to identify specific homes, streets and neighbourhoods to target with Wrap Up Leeds and Warmfront promotion. Wrap Up Leeds is also gathering additional data on properties contacted to supplement the energy database. We have also used the evidence to select areas most suitable for CESP funding and are currently working with partners to develop CERT supported initiatives for external wall insulation and narrow-cavity wall insulation.</p> <p>Government made the Energy Performance Certificate (EPC) database available to certain organisations, including local authorities, in June 2012. Since 2007, almost 120,000 EPC surveys have been undertaken in Leeds and the Council is now in the process of purchasing these records. These will help to target the Green Deal, ECO, RHI or other suitable energy efficiency initiatives in future.</p>		

	<p>Position reported in November 2012:</p> <p>The Council has now purchased EPC data for 109,870 unique properties and this has already been used for a targeted Wrap Up Leeds mailing. The data is currently being analysed to target further initiatives.</p> <p>Current position:</p> <p>The Environment Policy Team continues to use EPC data to target Wrap Up Leeds ECO (please see response to question 5 and 14 for further details).</p>	2 - Achieved	
<p>Recommendation 16. That the Director of Public Health in Leeds works closely with the Clinical Commissioning Groups to look at the potential of providing longer term funding to maintain the existing Warm Homes Service (which has been partially funded by the time limited Department of Health Warm Homes Healthy People scheme) administered by Care and Repair</p>	<p>Formal Response (provided by the Director of Public Health in July 2012):</p> <p>The Scrutiny report highlights the need for a partnership approach to align funding for preventative care in terms of tackling category 1 hazards such as excess cold. NHS Airedale, Bradford and Leeds will be working with Clinical Commissioning Groups to progress the Winter Plan 12/13 and to implement the Department of Health Cold Weather Plan. The Cold Weather Plan aims to prepare for, alert people to and prevent the major avoidable effects of winter on people's health. The Director of Public Health and Clinical Commissioning Groups will consider whether the Warm Homes Service, administered by Care and Repair, could be funded as part of this winter planning process.</p> <p>Position reported in November 2012:</p> <p>The Winter Plan for Leeds has been developed through the Urgent Care Stakeholder group incorporating priorities from the Cold Weather Plan. NHS Leeds has identified resource for 2012/13 to strengthen existing activity within the Third sector to reduce the hazardous effects of cold on vulnerable people.</p>		

	<p>As part of Winter Plan, Leeds City Council, with support from NHS Leeds Public Health and CCGs have submitted a proposal to Department of Health 'Warm Homes Healthy People fund' for Third sector organisations to provide energy efficiency measures to vulnerable people. The outcome of this bid will be communicated by the beginning of November.</p> <p>This proposal outlines activity that will increase energy saving advice and measures to vulnerable people through The Warm Homes Service, Groundwork and Leeds Community Foundation Trust. The outcome of this funding bid will be communicated in November 2012</p> <p>Current position: Leeds City Council application for the Warm Homes Healthy People fund (November 12) supported by NHS Leeds Public Health and Leeds CCGs was successful and Leeds was allocated 199K (details outlined in recommendation 18) for 12/13 winter warmth activity as part of the Winter planning process. An evaluation has been completed by Leeds Metropolitan University, the findings of which were positive in relation to impact and patient experience.</p> <p>The 13/14 Winter Plan for Leeds has been developed through the Urgent Care Stakeholder group, incorporating priorities from the Cold Weather Plan.</p> <p>Leeds City Council Public Health have worked with CCGs to identify CCG funding to strengthen existing activity within the Third sector to reduce the hazardous effects of cold on vulnerable people. Leeds North and South & East CCGs have identified 50K each as a one off payment to strengthen activity for 13/14. Discussions are on-going with Leeds West CCG.</p> <p>We have been notified that the Department of Health 'Warm Homes Healthy People fund' for Third sector organisations to provide winter warmth measures to vulnerable people will no longer be available.</p>	<p>4 - Not achieved (Progress made acceptable. Continue monitoring.)</p>	
--	---	--	--

	Public Health are currently exploring alternative funding opportunities to enable this activity to take place.		
<p>Recommendation 17 That the Director of Public Health in Leeds works closely with Care and Repair to begin building up a portfolio of case study evidence to illustrate to commissioners that where vulnerable householders have been in receipt of preventative measures aimed at tackling the hazard of excess cold, this has led to a positive impact in terms of improving their overall health and wellbeing</p>	<p>Formal Response (provided by the Director of Public Health in July 2012):</p> <p>The Director of Public Health agrees to work closely with Care and Repair to begin to build a portfolio of case study evidence to illustrate the impact of preventative measures aimed at tackling the hazard of excess cold. Four good case studies are already available, drawn from the Warm Homes Healthy People project funded by the Department of Health.</p> <p>Position reported in November 2012:</p> <p>As previously reported, four good case studies have been developed, drawn from the Warm Homes Healthy people programme of work. Work continues to progress to build on this portfolio of case studies.</p> <p>Current position:</p> <p>We continue to collect case studies in order to assist with the promotion of affordable warmth, for example from households assisted through the Warm Homes Healthy People Fund. As part of this year's project, we have commissioned Leeds Metropolitan University to undertake further evaluation using focus groups with clients and interviews with stakeholders, in order to assess health and wellbeing outcomes of the project and increase our likelihood of being able to carry out such schemes in the future.</p>	2 - Achieved	

<p>Recommendation 18. That the Director of Public Health in Leeds works with the Health and Wellbeing Board and Clinical Commissioning Groups to begin developing and exploring opportunities to lever in financial support for a broader programme of preventative measures aimed at tackling the hazard of excess cold across the city.</p>	<p>Formal Response (provided by the Director of Public Health in July 2012):</p> <p>The Director of Public Health in Leeds agrees to work closely with the Health and Wellbeing Board and Clinical Commissioning Groups to begin to develop and explore opportunities to lever in financial support. This work will form part of the winter planning process to prevent the major avoidable effects of winter on peoples' health.</p> <p>Position reported in November 2012: The Health Improvement Board held a discussion on fuel poverty and explored potential opportunities to lever in financial support for a broader programme of work.</p> <p>It was agreed at the last meeting to submit a joint proposal to the Department of Health Warm Homes Healthy People supported by CCGs, LCC and NHS Leeds. Other opportunities will be explored as they arise.</p> <p>Current position:</p> <p>The Warm Homes Health People bid (Nov 12), was successful and 199K was allocated by the DOH to resource winter wellbeing initiatives in Leeds (12/13). In addition to this Leeds Public Health allocated a further 171K to the Warm Homes Healthy People programme for allocation to the most vulnerable in Leeds.</p> <p>Evaluation of impact has just been completed by Leeds Metropolitan University with positive outcomes. A high level of demand for the services was experienced, with targeted interventions reaching vulnerable people. The evaluation recommends that similar schemes should be run in the future.</p> <p>Leeds City Council Public Health have worked with CCGs to identify CCG funding to strengthen existing activity within the Third sector to</p>	<p>4 - Not achieved (Progress made acceptable. Continue monitoring.)</p>	
--	---	--	--

	<p>reduce the hazardous effects of cold on vulnerable people. Leeds North and South CCGs have identified 50K each as a one off payment to strengthen activity for 13/14. Discussions are on-going with Leeds West CCG. (As outlined in recommendation 16)</p> <p>We have received notification that the Department of Health 'Warm Homes Healthy People fund' 2013, for Third sector organisations to provide energy efficiency measures to vulnerable people will no longer be available. Public Health are currently exploring alternative funding opportunities to enable this activity to take place.</p>		
<p>Recommendation 19. That the Director of Environment and Neighbourhoods leads on developing a strategy with key partners, including the CAB and Advice Leeds, for undertaking benefit checks on an annual basis accompanied with a service offer for conducting fuel tariff checks.</p>	<p>Formal Response (provided by the Director of Environment and Neighbourhoods in July 2012):</p> <p>Over the years, Environment and Neighbourhoods has cooperated with organisations such as Welfare Rights and CAB through the Affordable Warmth Partnership and various projects to provide vulnerable residents with both income maximisation and fuel poverty advice. The Director of Environment and Neighbourhoods agrees to work with Welfare Rights, CAB and Advice Leeds to develop a strategy for undertaking annual benefits checks and offering fuel tariff checks.</p> <p>Position reported in November 2012:</p> <p>The Fuelsavers Team has developed a pilot project with the CAB network to offer joint fuel tariff, debt and income maximisation advice over the winter period. We have requested funding for this project as part of our Warm Homes Healthy People bid from the Department of Health, and we expect to find out whether we have been successful towards the end of October.</p>		

	<p>Current position: The Environment Policy Team undertook a successful pilot project with Leeds and Chapeltown CAB which provided fuel bill and income maximisation advice to householders in Leeds. We are looking at ways of developing an on-going project in the future and are feeding our finding back to the Advice Services Review and contributing to the service specification for the new advice service in Leeds.</p> <p>We will continue to offer training and support to the Advice Leeds network.</p>	4 - Not achieved (Progress made acceptable. Continue monitoring.)	
<p>Recommendation 20. That the Director of Environment and Neighbourhoods leads on undertaking a cost-benefit and risk analysis for the Council to bulk purchase domestic heating fuel for householders. The findings of this analysis should be reported back to the Executive Board and Scrutiny for consideration within 3 months of the South Holland documents becoming available.</p>	<p>Formal Response (provided by the Director of Environment and Neighbourhoods in July 2012):</p> <p>Environment and Neighbourhoods has recently been in contact with a number of bulk fuel purchase schemes, including South Holland, in order to undertake a comparative analysis of the various proposals. The Director of Environment and Neighbourhoods agrees to develop proposals for a bulk fuel purchase scheme that also delivers energy efficiency improvements to participating households. This will be presented to the Executive Board and Scrutiny Committee within three months of the South Holland documents becoming available or earlier.</p> <p>Position reported in November 2012:</p> <p>South Holland have not yet published their documents. We are in the process of evaluating the best approach to take with the scheme. We are gathering feedback from existing pilot projects, such as those in South Lakeland, and Cornwall and will be reporting on the best approach to take to the scrutiny committee, as well as developing a business case in the near future.</p> <p>A funding opportunity has recently been announced by DECC to help coordinate and conduct a bulk fuel purchasing initiative. We are</p>		

	<p>currently developing a proposal ahead of the 30th November deadline and will take a formal proposal to Executive Board for approval in December 2012.</p> <p>Current position:</p> <p>Leeds ran a pilot collective fuel switch in early 2013 which was funded by the DECC Cheaper Energy Together Fund. This was run in conjunction with neighbouring local authorities in Leeds City Region and Community Energy Direct. Over six thousand householders registered for the switch with 618 switching and saving on average £171 per annum.</p> <p>We had intended to undertake a collective fuel purchase in order to provide a below market tariff for householders, with an individual sweep to ensure that all householders have the best possible tariff. Unfortunately, having made their initial enquiries with the market, our switching agent, Which? informed us that they would be unable to obtain a below market rate through a bulk purchase. Signed up clients were therefore provided with a quotation based on the individual sweep of the market.</p> <p>We are undertaking an evaluation of the scheme which will take into account the experience of other schemes across the Country. This will enable us to collate best practice and design the next phase with a view to increasing participation across the City.</p>	<p>4 - Not achieved (Progress made acceptable. Continue monitoring.)</p>	
--	---	--	--